



GESPASA
AVAILABLE FROM BELL FLOW SYSTEMS

Unit 7 Swan Business Centre, Buckingham, MK18 1TB
01280 817304
01280 817185
sales@bellflowsystems.co.uk



MGE-110
Electronic Aluminium Meter with oval gear



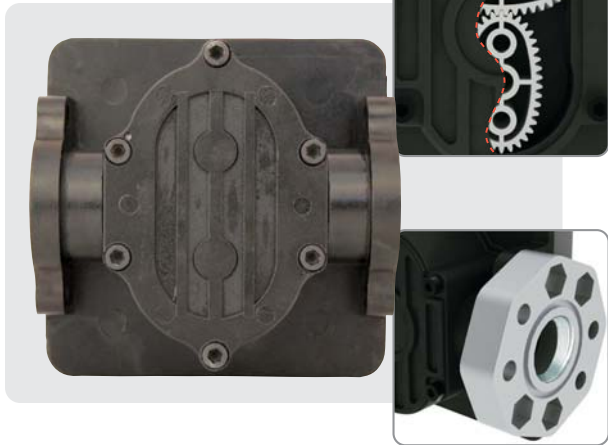
code 32600

G203



mm (approx.) 123
123 68
kg (approx.) 1.10

Oval gears of high accuracy



USE

- The **MGE-110** is made for private use. The meter security, regarding to material quality and reliability, is determined by the EC directive regulations and endorsed by the quality controls of leading companies in the sector; it also guarantees the toxicity absence and the negative ecological effects.
- It is suitable for diesel and lubricant measurement.

TECHNICAL DATA

- Measuring chamber: oval gears of high accuracy
 - Body made of **aluminium**
 - Digital Display of liquid crystal
- Functions:*
- **DISPLAY:** Display of the supplied litres (or the corresponding volume unit)
It shows the litres (or the corresponding volume unit) of the last service.
Display of 3 integers and 2 decimals: **"999.99"**
4 integers and 1 decimal: **"9999.9"**
5-digit integers: **"99999"**
 - **TOTAL:** Display of the supplied litre total (or the corresponding volume unit)
Maximum 99,999 litres (or the corresponding volume unit)
 - **RESET**
- Flow: **5-110 l/min**
 - Fluid density: 2-2000 cSt
 - Accuracy: **± 0.5 %**
 - Max. pressure: 55 bar
 - Max. temperature: 50 °C
 - Min. temperature: -10 °C
 - Connection through F1" thread or flange. Direct connection to the GESPASA pumps. Optional: 1" flanges
 - Feeding by button battery of long duration (approx. 4 years, according to its application)
 - Low battery warning
 - Calibration parameters and litre totalizer saved in **NON VOLATILE** memory

- Optional:
 - F1" complete aluminium flange kit code 800003036



- Direct connection through flange to the GESPASA pumps

